

GREAT WHITE GW48 CC | THRU-HULL INTERCHANGEABLE

Signature
 SERIES



GREAT WHITE GW48 Colour Change LED Underwater Light produces up to 16000 fixture lumens and has almost unlimited mounting options thanks to its ultra low profile bezel, Thru Hull mounting offers secure fixing with the additional benefit of a removable LED cartridge to eliminate the need for hauling.

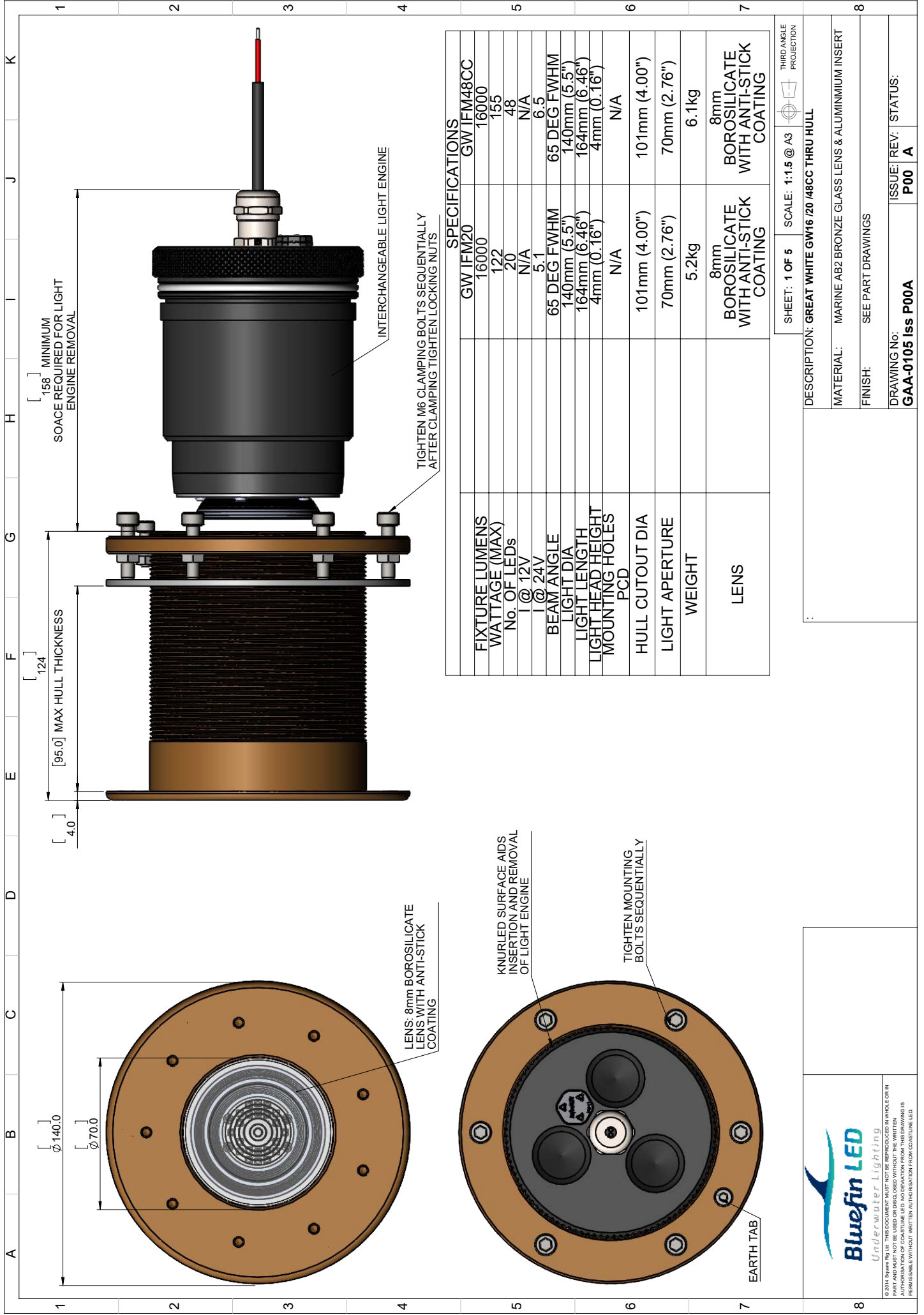
Colour-Change models can be strobed, dimmed or sequenced, allowing you to pick the best colour to compliment your environment, suit your mood or to create a custom party theme with our light to sound feature.

No matter what colour you choose your boat is going to be one of a kind at the dock in the bay or out on the open seas.

- RINA Type approval
- 2-Year Warranty

SPECIFICATION	GREAT WHITE GW48 CC COLOUR CHANGE
Mounting Type	Thru-Hull Interchangeable
Hole cut out size	101mm
Maximum Lamp Lumens	43000
Fixture Lumens	16000
Max Wattage	155 Watts
Typical Life Expectancy	50,000 hours
Voltage	24v
Power Draw	6.5 Amps
Protection	Over / Under Voltage, Over Current, Reverse Polarity protection, Thermal protection.
Fixture Profile	4mm
Fixture Diameter	140mm
Fixture Length	170mm
Lens Type	Optical grade 8mm Borosilicate glass with Guard X coating
Fixture Material	AB2 Bronze with aluminium light engine cartridge
Beam Angle	65 Degree
Warranty	2 year
Type Approval	RINA IEC 60529
Available Colours	RGBW Colour change
Features	Endless colours, cycling, strobe, dimmer or sound to light
Suitable Use	Below the water-line only
Spacing	1.2 - 2mtr
Driver Type	External IP67 Plug and play remote box with DMX/WIFI control Must purchase the WIFI/DMX Controller for functions
Total weight	6.1 kg
Attached cable length	2 mtr Plug & play
Included in box	WIFI /DMX Driver box IP67, In-line fuse holder & rated fuse, Inline Crimps, Heat shrink, Template and installation instructions
ACCESSORIES	(OPTIONAL)
Junction Box	4 Way IP68 Wiring Junction Box
Delrin Sleeve	Isolating kit for steel, aluminium and carbon fibre hulls
220/110v Power Supply	Power supply 24v
WIFI/DMX Controller	DMX controller with built in WIFI and phone/tablet app download
I.Y.S Lighting Control	Control via MFD screen or mobile device





SPECIFICATIONS	
FIXTURE LUMENS	GW IFM20 16000
WATTAGE (MAX)	122
No. OF LEDS	20
1 @ 12V	N/A
1 @ 24V	5.1
BEAM ANGLE	65 DEG FWHM
LIGHT DIA	140mm (5.5")
LIGHT LENGTH	164mm (6.46")
LIGHT HEAD HEIGHT	4mm (0.16")
MOUNTING HOLES PCD	N/A
HULL CUTOUT DIA	101mm (4.00")
LIGHT APERTURE	70mm (2.76")
WEIGHT	5.2kg
LENS	8mm BOROSILICATE WITH ANTI-STICK COATING
	8mm BOROSILICATE WITH ANTI-STICK COATING
	6.1kg

SHEET: 1 OF 5 SCALE: 1:1.5 @ A3 THIRD ANGLE PROJECTION

DESCRIPTION: GREAT WHITE GW16 /20 /48CC THRU HULL

MATERIAL: MARINE AB2 BRONZE GLASS LENS & ALUMINIUM INSERT

FINISH: SEE PART DRAWINGS

DRAWING NO: **GAA-0105 Iss P00A** ISSUE/ REV: STATUS: **P00 A**